

Mortise Cylinder



Application

Compatible with residential and commercial door locksets. Interfaces with locksets of major brands (see available cams).

Can retrofit a 'Jumbo' cylinder with an adaptor ring.

Operation

360° rotation by operating key or thumbturn.

Materials

Body and plug: high quality brass

Cam: steel

Pins: nickel silver and stainless steel

Standard finish

Nickel chrome matt, nickel chrome, shiny brass

Special finishes

Antique bronze, black, antique brass, PVD

Cylinder mechanism

Mul-T-Lock's unique, high precision pin tumbler system.

Keys

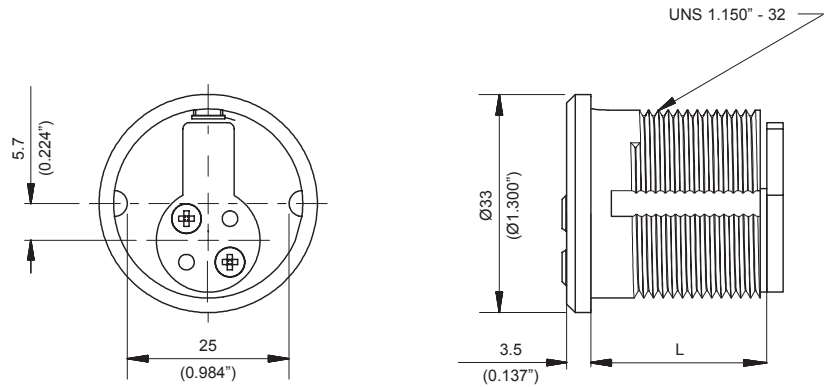
Reversible nickel silver key with plastic key head and colored insert. Also available in all nickel silver.

Cylinder options

- Classic, Interactive®, MT5® platforms
- '3 IN 1' (changeable combination)
- Keyed different, keyed alike
- Master keyed
- Variety of cams

Standards

ISI950

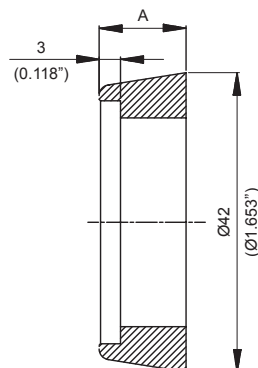


Length available (mm)

Cylinder	L	
	mm	Inch
1"(*)	23.1	0.909
1 1/8"	27.1	1.067
1 1/4"	30.3	1.193
1 3/8"	33.5	1.318
1 1/2"	36.7	1.445
1 3/4"	43.1	1.697
2"	49.5	1.949

(*) Product with 4 chambers, not UL Listed.

Spacer ring



A	
mm	Inch
5.7*	0.224*
8.9	0.350
12.2	0.480
15.5	0.610

*Supplied as standard



www.mul-t-lock.com

Mortise Cylinder Cams

Options Available

<p>Adams Rite type P/N 8500020</p>	<p>Yale standard type P/N 8500014</p>	<p>Russwin type P/N 8500019</p>	<p>Falcon type P/N 8500041</p>	<p>Lockwood type P/N 8500054</p>
<p>Segal type P/N 86001008</p>	<p>Schlage type P/N 8500057</p>	<p>Sargent offset type P/N 8500082</p>	<p>Jumbo type P/N 85000112 (Required ring 85000157)</p>	<p>Baldwin type P/N 85000117</p>
<p>Yale type P/N 85000165</p>	<p>Vingcard type P/N 51075696</p>	<p>Yale type A-04 P/N 85000185</p>	<p>Yale type 2160 P/N 85000186</p>	